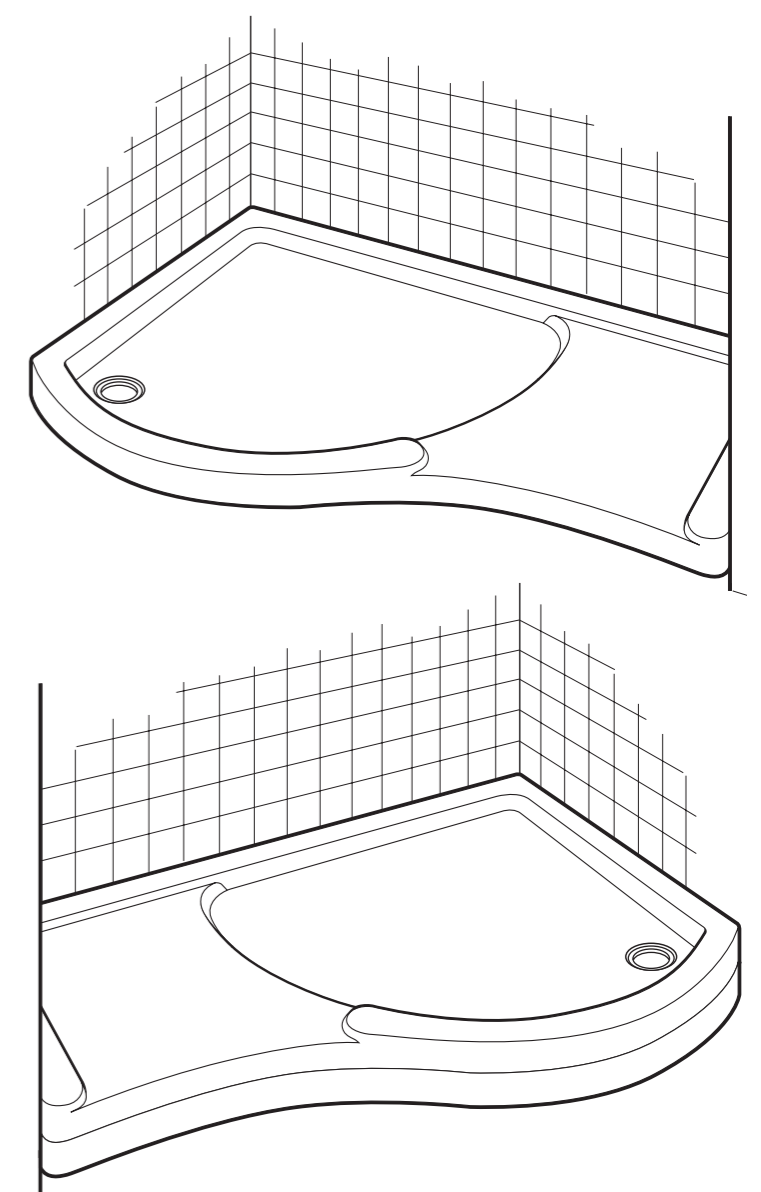
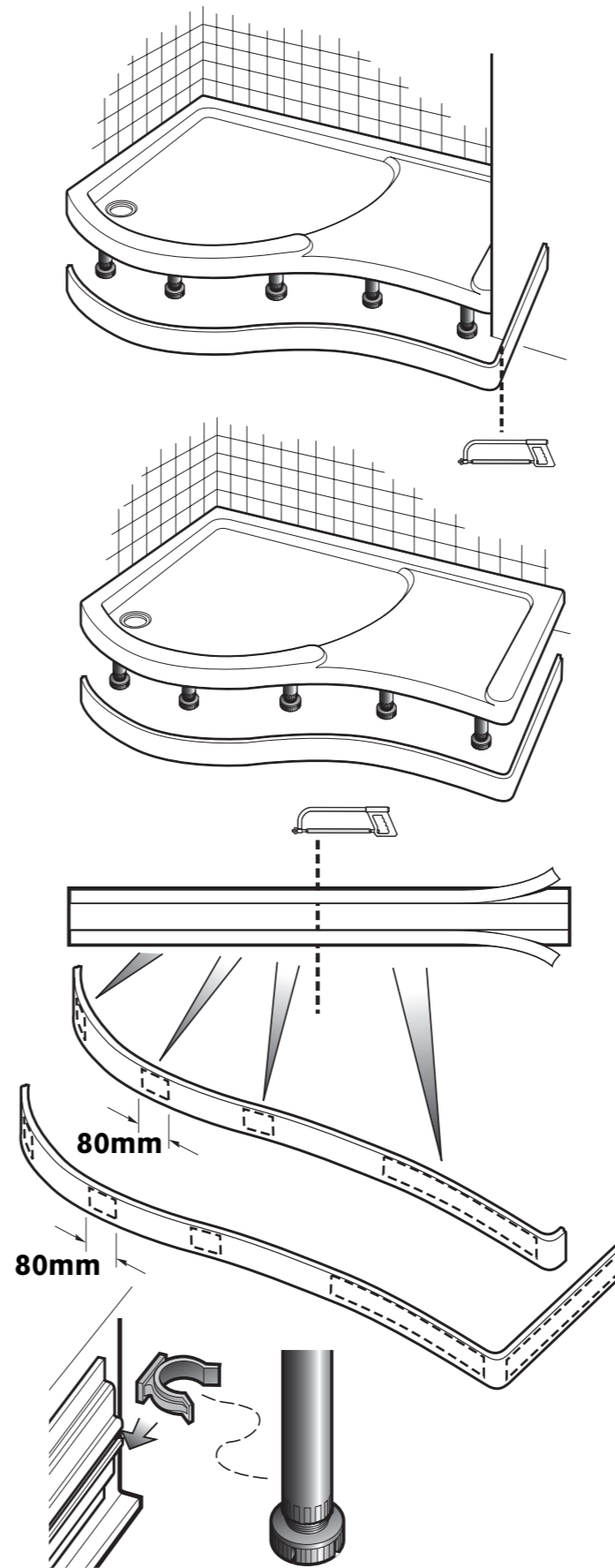


FITTING OF FASCIA TO FULL HEIGHT TRAY



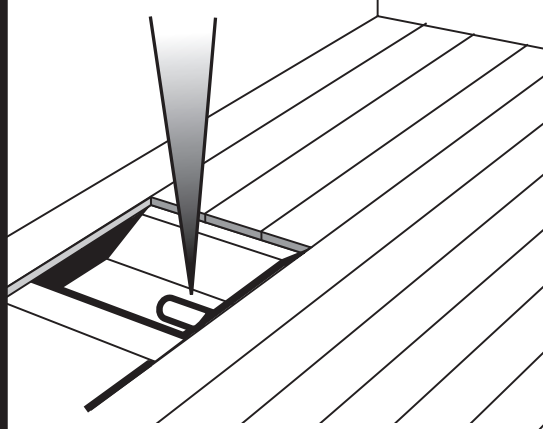
? 44 (0) 151 606 5000

Manufactured in the UK by Kohler Daryl Limited
Alfred Road, Wallasey, Wirral, CH44 7HY England
Tel 44 (0)151 606 5000 Fax 44 (0)151 638 0303
E-mail aroco@aroco-showers.co.uk
www.daryl-showers.co.uk

Walk-in Tray
1400 & 1700mm

LH VERSION SHOWN.
RH FITTING IS A MIRROR
IMAGE OF THESE
INSTRUCTIONS

INSTALL WASTE
PIPE BEFORE
FITTING TRAY &
ALLOW ACCESS
FOR CONNECTION

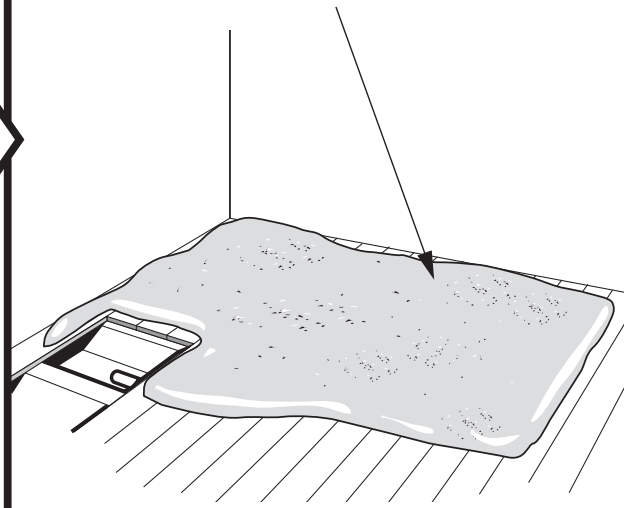


THE WASTE PIPE
MUST SLOPE BETWEEN
18 AND 90MM PER METRE LENGTH

1

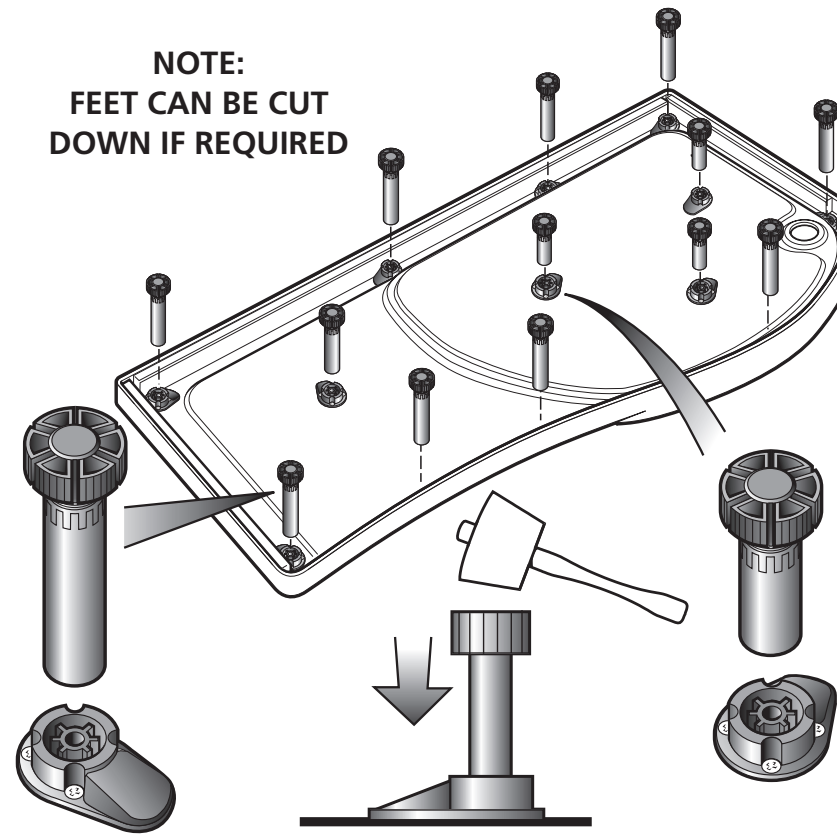
LOW LEVEL TRAY ONLY

LAY A 5:1 SAND/CEMENT MIX
TO SUPPORT THE BASE



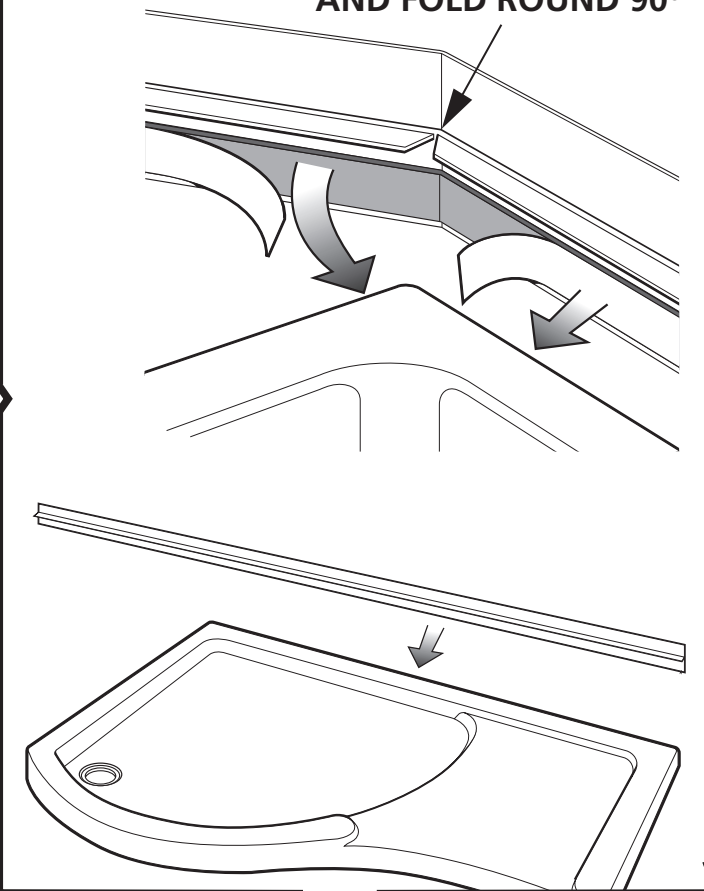
FULL HEIGHT TRAY ONLY

NOTE:
FEET CAN BE CUT
DOWN IF REQUIRED



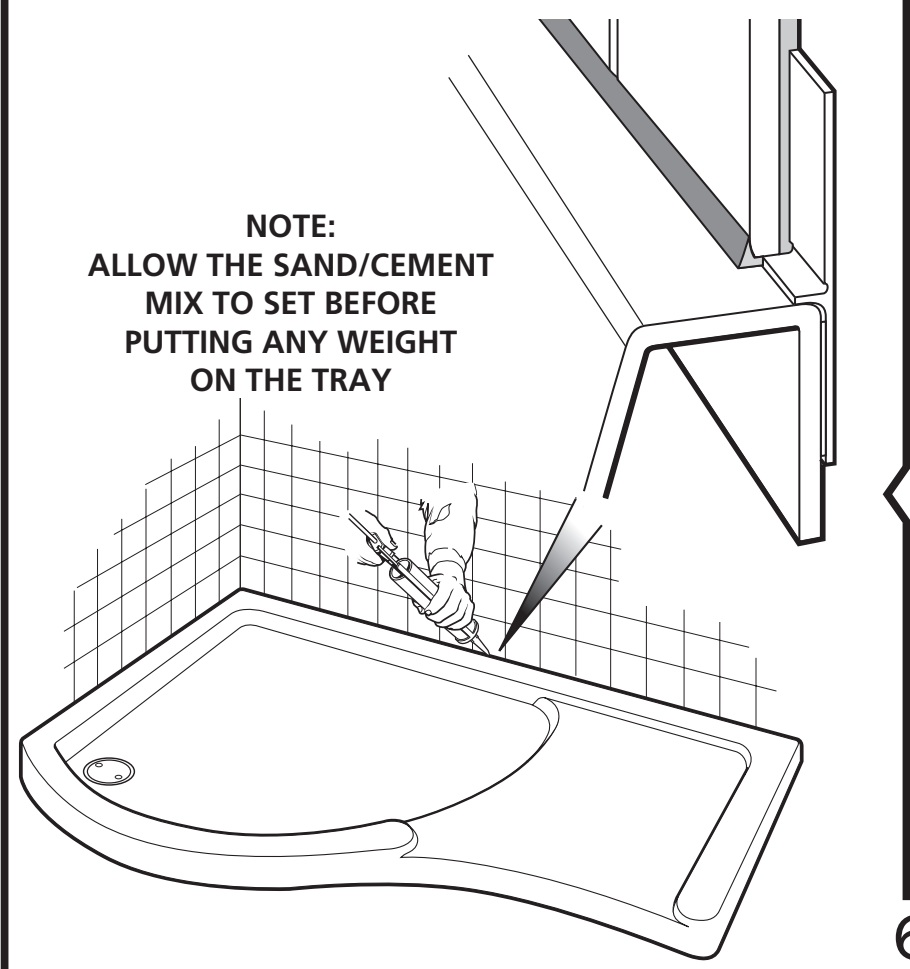
2

MITRE WITH CUTTERS
AND FOLD ROUND 90°



3

NOTE:
ALLOW THE SAND/CEMENT
MIX TO SET BEFORE
PUTTING ANY WEIGHT
ON THE TRAY

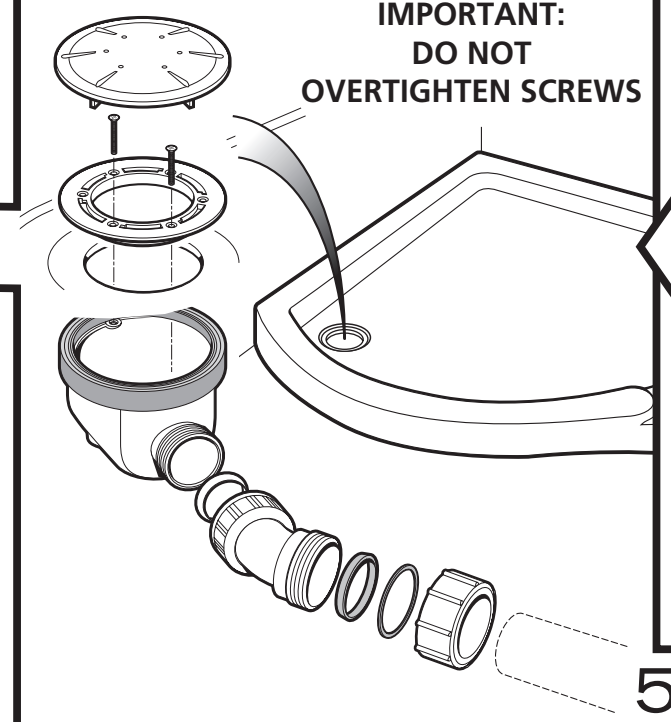


6

NOTE: ALTERNATIVE SCREWS ARE
PROVIDED. USE THE SHORTEST ONES
THAT SUIT THE THICKNESS OF THE TRAY

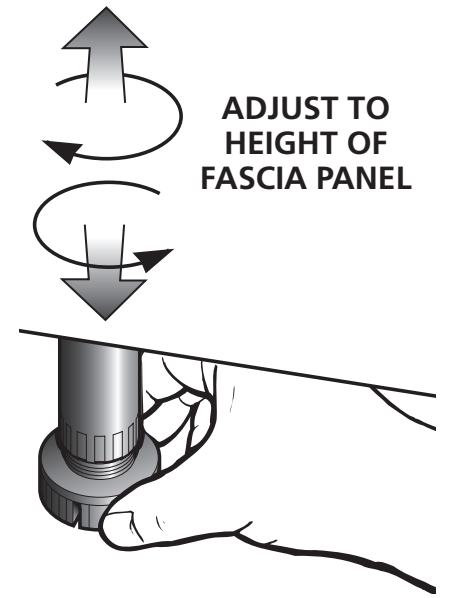
TIGHTEN SCREWS UNTIL THE GASKET IS
GRIPPED AND WILL NO LONGER MOVE.

IMPORTANT:
DO NOT
OVERTIGHTEN SCREWS

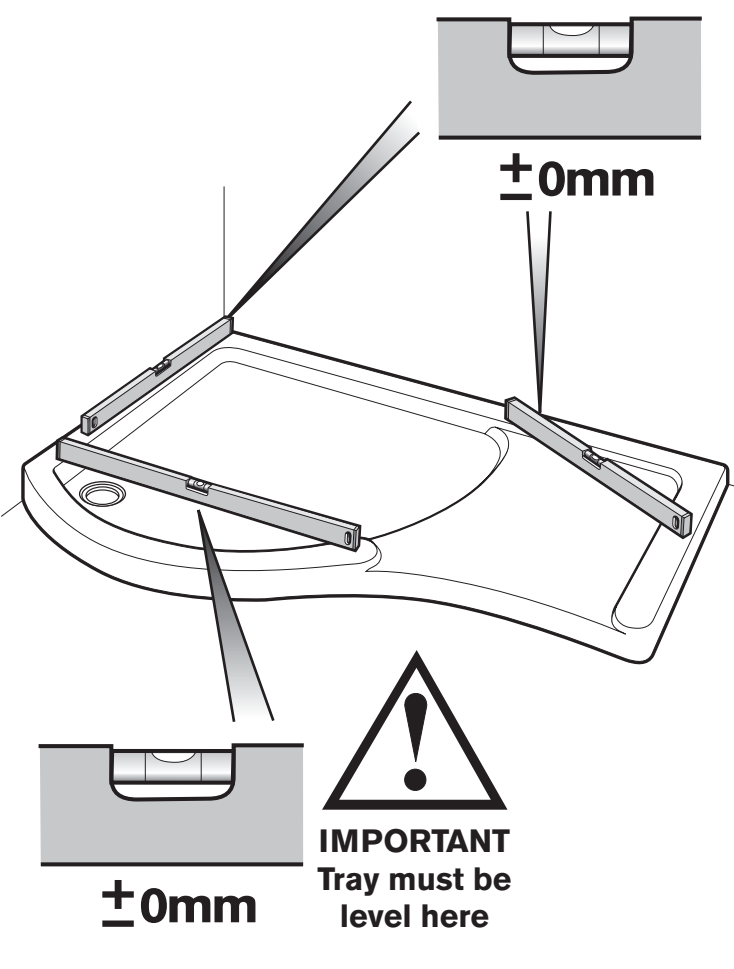


5

HEIGHT ADJUSTMENT
FOR FULL HEIGHT TRAY



4



IMPORTANT
Tray must be
level here